

Adult Basic Education

for College & Career

Information Technology (IT) IBEST Certificate Program

- » Are you interested in a career in Information Technology?
- » Do you need to strengthen your reading, writing or math skills, or earn your High School Equivalency diploma?

The Information Technology IBEST is for you!

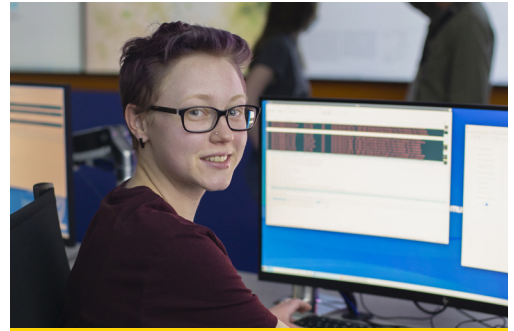
The IT Integrated Basic Education and Skills Training (IBEST) certificate provides students with the technical skills desired by the industry while, at the same time, improving the skills needed for academic and career success.

What can I do with an Information Technology Certificate?

This hands-on, real-world training program will provide you with a well-rounded introduction to all aspects of information technology, including the foundational skills needed to administer and secure computers in both Windows and Linux environments.

Read about the program costs, student educational debt, earnings and completion rates at: pima.edu/ittechnician-cert.

Call 520.206.7147 to get started!



**Prepare now
for a career in
Information
Technology!**

**For more information,
contact Stacey Fox,
520-206-7147 or
smwrona@pima.edu.**



520.206.4500 | pima.edu |    

Pima Community College is an equal opportunity, affirmative action employer and educational institution committed to excellence through diversity. Upon request, reasonable accommodations will be made for individuals with disabilities to support access to all programs and services. Every effort will be made to provide reasonable accommodations in a timely manner. For student, public and employee accommodation requests and for information related to the ADA compliance process, please contact ADAhelp@pima.edu, 520-206-6688, or West Campus Room C130, 2202 W. Anklam Road, Tucson, AZ 85709-0095.

Governing Board

Catherine Ripley, *District 1*
Demion Clinco, *District 2*
Maria D. Garcia, *District 3*
Meredith Hay, Ph.D., *District 4*
Luis L. Gonzales, *District 5*

Chancellor Lee D. Lambert, J.D.



PimaCommunityCollege

Keep striving.